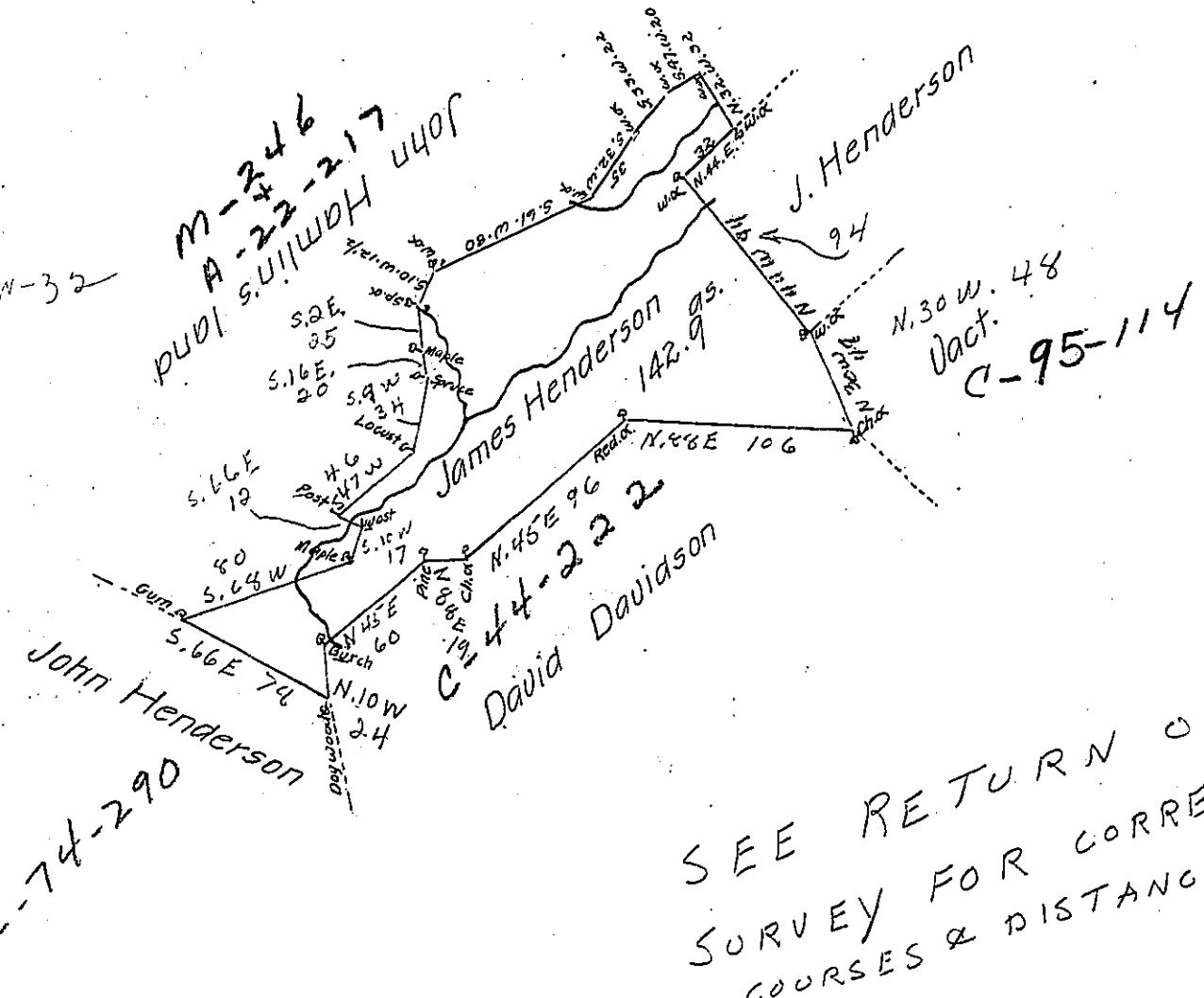


Courses & Dist^s.

- N. 44. E. 32.
- S. 47. W. 20. ✓
- S. 33. W. 22. ✓
- S. 32. W. 35. ✓
- S. 61. W. 80. ✓
- S. 10. W. 12 1/2 ✓
- S. 2. E. 25. ✓
- S. 16. E. 12. ✓
- S. 9. W. 34. ✓
- S. 47. W. 46. ✓
- S. 66. E. 12. ✓
- S. 10. W. 17. ✓
- S. 68. W. 80. ✓
- S. 66. E. 78. ✓
- (6617) W. 24. ✓
- (6615) E. 60. ✓
- (64) 88. E. 19. ✓
- N. 45. E. 96. ✓
- N. 88. E. 106. ✓
- N. 30. W. 48. ✓
- N. 44. W. 94. ✓



Draught of a tract of land situate in Ferrimanagh township Mifflin County containing one hundred & forty two acres & nine tenths & the usual allowance of six pCent for roads &c^o surveyed for James Henderson May 27th. 1793 by virtue of his Warrant dated March 25th. 1793^o.

James Harris (Depl.)

To Daniel Brodhead Esqr
Surv. Genl of Pennsylvania

IN TESTIMONY that the above is a copy of the original remaining on file in the Department of Internal Affairs of Pennsylvania, made conformably to an Act of Assembly approved the 16th day of February, 1833, I have hereunto set my Hand and caused the Seal of said Department to be affixed at Harrisburg, this eighth day of February 1905

George P. ...
Secretary of Internal Affairs.